

# Meadows Creek Farm Black & White Spring Forward Bull Sale

Including Consignments from Collins Farms,  
& Mull Meadow Farm

4th Annual

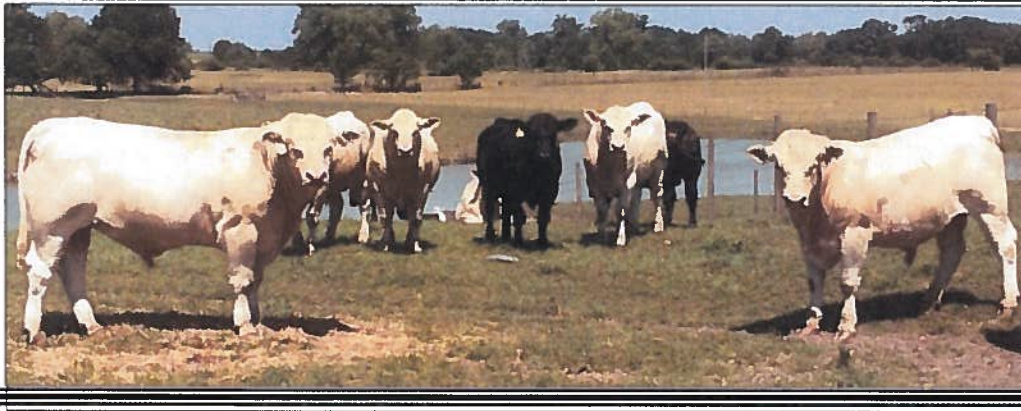
## Black & White Spring Forward Bull Sale

February 23<sup>rd</sup>, 2019 12:00 p.m. CST

Montgomery Stockyards  
Montgomery, Alabama

53 Bulls

\* 27 Angus \* 24 Charolais \* 1 SimAngus \* 1 Char x Angus



### Special Feature:

40 Registered Charolais & Registered Angus Females

Consigned by Meadows Creek Farm, Akin Charolais, Collins Farms, David Burkett,  
Staples Charolais, JanBil Farms plus Commercial Angus Cows 3 to 8 years old,  
Pairs & Bred Red Angus/Sim Crosses 4 to 8 years old

HEALTH: Bulls Have been vaccinated for IBR, BRSV, BVD, PI3, Leptospirosis and clostridial disease. All bulls have been dewormed by choice of seller. Proper interstate health charts required for shipping will be available.

FERTILITY TEST: All bulls will have been semen-tested approximately 60 days prior to sale and will be accompanied with proper documentation.

TERMS & CONDITIONS: All bulls sell under the terms and conditions of each breed association. We guarantee all breeding bulls sold in this sale are fertile to the best of our knowledge. If they are determined to be a non-breeder any time in the next 12 months after purchase, we will provide a satisfactory replacement or issue you a credit less salvage value toward next year's sale. This is not a life insurance policy. We will not replace a dead animal if it is killed, dies, or is injured for any other reason. We would suggest that normal care be provided to these animals.

TERMS OF SALE: Cash. All cattle are to be paid for by the purchaser during or immediately after the sale unless prior arrangements are in place. Cattle will not be transferred until payment is made in full.

PURCHASER'S RISK: Each animal becomes the purchaser's risk as soon as sold. Arrangements need to be made in advance for any animals held over for a later transport date.

DELIVERY: Reputable livestock haulers will be available on sale day to assist with delivery of cattle. We will gladly assist you in this matter. **All cattle purchased must be gone by Sunday, February 24th at 12:00 (NOON).**

ANNOUNCEMENTS: Announcements made sale day will take precedence over sale book. We reserve the right to withdraw any animal prior to sale.

SCHEDULE OF EVENTS & FOOD: Cattle will be available at the Montgomery Stockyard for viewing after 12:00 noon on Friday, February 22nd. Complimentary coffee will be available morning of the sale. The Stockyard Grill will be open.

SALE DAY PHONES:

Montgomery Stockyards .....	334-288-8060	Richard Meadows .....	334-797-4870
Jerry Etheredge.....	334-422-1306	Frankie Mullikin... ..	864-506-1282
Darrell Stokes.....	334-309-5255	Jim Collins .....	478-957-6572
Whit Lane .....	334-558-4021	Gary Staples.....	205-369-8706
David Burkett.....	334-652-9149	Will Fiske.....	540-414-4838
Jim Akin .....	256-710-4897	Chad "Cracker" Johnson...	352-535-5320
Mark Sims.....	580-595-0901	Bill Nutt.....	678-901-5739

# **LIVE INTERNET BIDDING AT**

## **www.cowbuyer.com**



- View/bid online in Real Time
- Registration is required. Please register at least one (1) hour prior to sale time at [www.cowbuyer.com](http://www.cowbuyer.com)
- High Speed Internet is required. Slower speed will not permit you to bid and keep pace in real time.
- Terms: Purchasing online constitutes a legal contract and promise for payment of purchases. All purchases must be paid within ten (10) days of sale date and prior to load out or delivery of cattle purchased.
- Cowbuyer.com is a service provider and is not responsible for the activity or inactivity of any technology, internet connection at the sale site or connection and technology of the bidders.
- For iPad, iPhone or android users be sure to download the COWBUYER App to utilize mobile bidding.

For questions or information, contact:

Aaron Ray Tompkins – 336/363-4639, [atompkin@vt.edu](mailto:atompkin@vt.edu)

Will Fiske – 540-414-4833

# Black & White Spring Forward

## Bull Consignors

Richard & Glenn Meadows      Meadows Creek Farm      Bull Lots  
Columbia, Alabama      334-797-4870      1-38

Meadows Creek Farm's bulls have been BSE and Trichinosis tested by  
Dr. Perry Mobley, Shorterville, AL 334-790-7914

Frankie Mullikin      Mull Meadow Farm      Bull Lots  
Pendleton, South Carolina      864-506-1282      40-45

Mull Meadow Farm's bulls have been BSE and Trichinosis tested  
by Dr. Emily Wagner, Pendleton, SC 864-356-6858

Jim and Jimmy Collins      Collins Farms      Bull Lots  
Cusseta, Alabama      478-957-6572 (Jim)      51-60  
334-559-3227 (Jimmy)

Collins Farms bulls have been BSE and Trichinosis tested by  
Dr. Matt Christjohn, Wedowee, AL 256-835-7694

Thomas Ellis      Triple E Farms      Bull Lot 61  
Hope Hull, Alabama      334-392-4303

Triple E Farms bulls have been BSE and Trichinosis tested  
by Dr. Sean Custard, Montgomery, AL 334-412-1759

# Black & White Spring Forward

## Charolais Female Consignors

Richard & Glenn Meadows Columbia, Alabama	Meadows Creek Farm 334-797-4870 (cell)	Lots 101-105 119-127
Gary Staples Steele, AL	Staples Charolais 205-369-8706	Lots 106-110
David Burkett Georgiana, Alabama	Burkett Farm 334-652-9149	Lots 111-113
Jim Akin Lexington, Alabama	Akin Farm 256-229-5395 (home) or 256-710-4897 (cell)	Lots 114-118

## Angus Female Consignors

Frankie Mullikin Pendleton, South Carolina	Mull Meadow Farm 864-506-1282	Lots 140-144
Jim and Jimmy Collins Cusseta, Alabama	Collins Farms 478-957-6572 (Jim)	Lots 151-152

## Commercial Females

**COLLINS FARMS: Cusseta, AL--Jim Collins 478-957-6572    Lots 153-170**

**17 head of ANGUS COWS from our genetics verified program. 3-8 years old bred to performance Angus calving February-June. More details in sale update sheet**

**JANBIL FARM: Cedartown, GA--William Nutt 678-901-5739    Lots 171-200**

**30 Red Angus x Red Simmental Cows, 4-8 year olds, bred to Red Angus/Red Simmental bulls, calving February-June.**

**MEADOWS CREEK FARM: Columbia, AL—Richard Meadows 334-797-9050    Lots 201-215**  
**Angus Crossbred Cows bred to Charolais and SimAngus bulls**

# MEADOWS CREEK CHAROLAIS BULLS

<b>1</b>	MC WM Southern Lee 680	P	Charolais
Meadows Creek Farm			Tattoo
DOB 4/14/17 Reg. No. M918971			680
Sire: Southern Legend 38027			
Dam's Sire: OW Sandcreek S179			
EPD's/Percentile Rank			
Performance Data/Ratio			
BW	WW	YW	M
-0.2	27	51	9
40%	65%	65%	55%

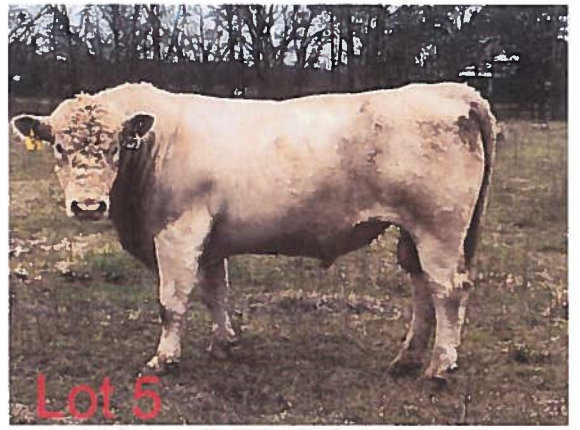
<b>2</b>	MC SCF 7512 P	P	Charolais
Meadows Creek Farm			Tattoo
DOB 4/9/17 Reg. No. M904137			S7512
Sire: OHF Wind 4827 ET			
Dam's Sire: CMF 241 Gridiron 437W			
EPD's/Percentile Rank			
Performance Data/Ratio			
BW	WW	YW	M
2.4	28	48	8
85%	60%	70%	65%

<b>3</b>	MC Hyway 646	P	Charolais
Meadows Creek Farm			Tattoo
DOB 2/4/17 Reg. No. M919049			646
Sire: Southern Hyway 38030			
Dam's Sire: MC Sir Big Duke 113 P			
EPD's/Percentile Rank			
Performance Data/Ratio			
BW	WW	YW	M
1.4	26	44	12
65%	75%	70%	80%

<b>4</b>	MC SCF 6644 P	P	Charolais
Meadows Creek Farm			Tattoo
DOB 10/17/16 Reg. No. M899582			S6644
Sire: MC Nebraska 2115 *Scar on Right Ey			
Dam's Sire: M6 Grid Maker 104 PET			
EPD's/Percentile Rank			
Performance Data/Ratio			
BW	WW	YW	M
2.5	34	64	11
85%	35%	30%	40%

<b>5</b>	MC WM Bluegrass Bo Peep 593Scurs	P	Charolais
Meadows Creek Farm			Tattoo
DOB 1/6/16 Reg. No. M919055			593
Sire: MC JRA Alabama Bluegrass A11			
Dam's Sire: BJR Sir Beau OD X003 ET P			
EPD's/Percentile Rank			
Performance Data/Ratio			
BW	WW	YW	M
-0.5	24	47	12
30%	75%	70%	40%

<b>6</b>	MC SCF 6158 P	P	Charolais
Meadows Creek Farm			Tattoo
DOB 11/15/16 Reg. No. M899581			S6158
Sire: MC Robotics 385			
Dam's Sire: TLD Mr Cigar 628P			
EPD's/Percentile Rank			
Performance Data/Ratio			
BW	WW	YW	M
1.5	33	62	11
70%	40%	35%	45%



# MEADOWS CREEK CHAROLAIS BULLS

7	MC Sandy Pate 524	P	Charolais								
	Meadows Creek Farm		Tattoo								
	DOB 1/30/16	Reg. No. M895697	524								
	Sire: OW Sandcreek S179										
	Dam's Sire: LT Rio Blanco 1234 P										
EPD's/Percentile Rank				Performance Data/Ratio							
BW	WW	YW	M	BW	WW	SC					
-1.2	19	44	14	81	357	34					
20%	90%	75%	25%								

8	MC BF Schurr Cannon B72	P	Charolais								
	Meadows Creek Farm		Tattoo								
	DOB 2/20/17	Reg. No. M897350	B72								
	Sire: RHM Shurr Wind 241										
	Dam's Sire: HBR Cannon 690 P										
EPD's/Percentile Rank				Performance Data/Ratio							
BW	WW	YW	M	BW	WW	SC					
2.2	39	64	6	85	575	35					
85%	20%	30%	80%								

9	MC BF Shurr Wind's Boy B60	P	Charolais								
	Meadows Creek Farm		Tattoo								
	DOB 8/30/16	Reg. No. M892024	B60								
	Sire: RHM Shurr Wind 241										
	Dam's Sire: LR Montana 708										
EPD's/Percentile Rank				Performance Data/Ratio							
BW	WW	YW	M	BW	WW	SC					
0.2	30	54	4	75	526	38					
45%	50%	55%	80%								

10	MC WM Big Ben Jo 684	Deh	Charolais								
	Meadows Creek Farm		Tattoo								
	DOB 2/26/16	Reg. No. M918972	685								
	Sire: WC Big Ben 9036 P										
	Dam's Sire: OW Sandcreek 2022 PLD										
EPD's/Percentile Rank				Performance Data/Ratio							
BW	WW	YW	M	BW	WW	SC					
-3.6	29	51	7	70	600	34					
4%	60%	65%	70%								

11	MC Nebraska 651	P	Charolais								
	Meadows Creek Farm		Tattoo								
	DOB 2/11/17	Reg. No. M919050	651								
	Sire: OW Sandcreek 2022 PLD										
	Dam's Sire: OW Sandcreek S179										
EPD's/Percentile Rank				Performance Data/Ratio							
BW	WW	YW	M	BW	WW	SC					
-3.6	26	45	12	70		34					
4%	70%	80%	35%								

12	MC Bo Knows 675	P	Charolais								
	Meadows Creek Farm		Tattoo								
	DOB 1/24/17	Reg. No. M919051	675								
	Sire: BJR Sir Beau OD X003 ET P	*Watch Dispositio									
	Dam's Sire: MC AL Gridmaker 101										
EPD's/Percentile Rank				Performance Data/Ratio							
BW	WW	YW	M	BW	WW	SC					
0.0	27	50	14	75		35					
40%	70%	70%	20%								



# MEADOWS CREEK CHAROLAIS BULLS

<b>13</b>	<b>MC Bo Knows 671</b>	<b>P</b>	<b>Charolais</b>
Meadows Creek Farm			<b>Tattoo</b>
			<b>671</b>
<b>DOB</b>	<b>1/22/17</b>	<b>Reg. No.</b>	<b>M919052</b>
<b>Sire:</b>	<b>BJR Sir Beau OD X003 ET P</b>		
<b>Dam's Sire</b>	<b>LR Montana 708</b>		
<b>EPD's/Percentile Rank</b>			
<b>BW</b>	<b>WW</b>	<b>YW</b>	<b>M</b>
-1.2	20	40	12
25%	90%	85%	35%
<b>Performance Data/Ratio</b>			
<b>BW</b>	<b>WW</b>	<b>SC</b>	
70		35	

<b>14</b>	<b>MC BF Schurr Bet</b>	<b>P</b>	<b>Charolais</b>
Meadows Creek Farm			<b>Tattoo</b>
			<b>B74</b>
<b>DOB</b>	<b>5/11/17</b>	<b>Reg. No.</b>	<b>M898622</b>
<b>Sire:</b>	<b>RHM Shurr Wind 241</b>		
<b>Dam's Sire</b>	<b>HBR Autopilot 8034 P</b>		
<b>EPD's/Percentile Rank</b>			
<b>BW</b>	<b>WW</b>	<b>YW</b>	<b>M</b>
1.3	32	54	8
70%	45%	55%	60%
<b>Performance Data/Ratio</b>			
<b>BW</b>	<b>WW</b>	<b>SC</b>	
83	549	34	

<b>15</b>	<b>MC Hyway 638</b>	<b>P</b>	<b>Charolais</b>
Meadows Creek Farm			<b>Tattoo</b>
			<b>638</b>
<b>DOB</b>	<b>2/26/17</b>	<b>Reg. No.</b>	<b>M919053</b>
<b>Sire:</b>	<b>Southern Hyway 38030</b>		
<b>Dam's Sire</b>	<b>BJR Sir Beau OD X003 ET P</b>		
<b>EPD's/Percentile Rank</b>			
<b>BW</b>	<b>WW</b>	<b>YW</b>	<b>M</b>
0.7	22	42	12
55%	85%	85%	35%
<b>Performance Data/Ratio</b>			
<b>BW</b>	<b>WW</b>	<b>SC</b>	
75		34	

<b>16</b>	<b>MC WM Legend Silver 683</b>	<b>P</b>	<b>Charolais</b>
Meadows Creek Farm			<b>Tattoo</b>
			<b>683</b>
<b>DOB</b>	<b>4/11/17</b>	<b>Reg. No.</b>	<b>M918973</b>
<b>Sire:</b>	<b>Southern Legend 38027</b>		
<b>Dam's Sire</b>	<b>BJR Super Silver 719 ET P</b>		
<b>EPD's/Percentile Rank</b>			
<b>BW</b>	<b>WW</b>	<b>YW</b>	<b>M</b>
-0.2	25	48	13
40%	75%	70%	30%
<b>Performance Data/Ratio</b>			
<b>BW</b>	<b>WW</b>	<b>SC</b>	
65	700	34	

<b>17</b>	<b>MC Bo Knows 660</b>	<b>P</b>	<b>Charolais</b>
Meadows Creek Farm			<b>Tattoo</b>
			<b>660</b>
<b>DOB</b>	<b>2/3/17</b>	<b>Reg. No.</b>	<b>M919054</b>
<b>Sire:</b>	<b>BJR Sir Beau OD X003 ET P</b>		
<b>Dam's Sire</b>	<b>LR Montana 708</b>		
<b>EPD's/Percentile Rank</b>			
<b>BW</b>	<b>WW</b>	<b>YW</b>	<b>M</b>
0.6	23	44	13
55%	85%	80%	30%
<b>Performance Data/Ratio</b>			
<b>BW</b>	<b>WW</b>	<b>SC</b>	
80		34	

<b>18</b>	<b>MC Bo Knows 674</b>	<b>P</b>	<b>Charolais</b>
Meadows Creek Farm			<b>Tattoo</b>
			<b>674</b>
<b>DOB</b>	<b>2/5/17</b>	<b>Reg. No.</b>	<b>M919034</b>
<b>Sire:</b>	<b>BJR Sir Beau OD X003 ET P</b>		
<b>Dam's Sire</b>	<b>BJR Sir O'Duke 975 P</b>		
<b>EPD's/Percentile Rank</b>			
<b>BW</b>	<b>WW</b>	<b>YW</b>	<b>M</b>
-1.0	24	47	16
25%	75%	75%	15%
<b>Performance Data/Ratio</b>			
<b>BW</b>	<b>WW</b>	<b>SC</b>	
75		33	



# MEADOWS CREEK CHAROLAIS BULLS

19	MC BF Mr Rushmore B701	P	Charolais								
	Meadows Creek Farm		Tattoo								
	B701										
DOB	4/28/17	Reg. No.	M919354								
Sire:	LT Rushmore 8060 PLD										
Dam's Sire	OW Sandcreek 2022 PLD										
EPD's/Percentile Rank				Performance Data/Ratio							
BW	WW	YW	M	BW	WW	SC					
-3.7	29	50	16	71	500	34					
4%	55%	65%	15%	92	95						

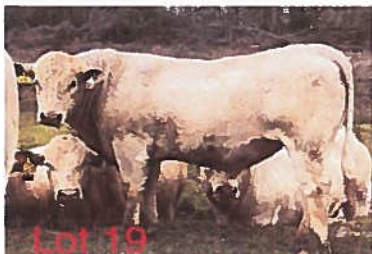
20	MC Patriot 661	P	Charolais								
	Meadows Creek Farm		Tattoo								
	661										
DOB	1/24/17	Reg. No.	M919037								
Sire:	LT Patriot 4004 PLD										
Dam's Sire	SCC Cigar 1129 ET										
EPD's/Percentile Rank				Performance Data/Ratio							
BW	WW	YW	M	BW	WW	SC					
-0.9	34	61	9	70		36					
30%	35%	35%	60%								

21	MC Hyway 641	P	Charolais								
	Meadows Creek Farm		Tattoo								
	641										
DOB	2/13/17	Reg. No.	M919038								
Sire:	Southern Hyway 38030										
Dam's Sire	OW Sandcreek S179										
EPD's/Percentile Rank				Performance Data/Ratio							
BW	WW	YW	M	BW	WW	SC					
-0.1	24	43	11	80		34					
45%	80%	80%	45%								

22	MC Legend 622	Scurs	Charolais								
	Meadows Creek Farm		Tattoo								
	622										
DOB	3/10/17	Reg. No.	M919044								
Sire:	Southern Legend 38027										
Dam's Sire	MC AL Gridmaker 101										
EPD's/Percentile Rank				Performance Data/Ratio							
BW	WW	YW	M	BW	WW	SC					
0.9	34	58	10	80		34					
60%	50%	45%	50%								

23	MC SCF 6626 P	P	Charolais								
	Meadows Creek Farm		Tattoo								
	S6626										
DOB	9/27/16	Reg. No.	M899595								
Sire:	MC Nebraska 2115										
Dam's Sire	SCF Steele Grazer 4321 P										
EPD's/Percentile Rank				Performance Data/Ratio							
BW	WW	YW	M	BW	WW	SC					
1.4	18	37	12	82	437	35					
70%	90%	85%	35%								

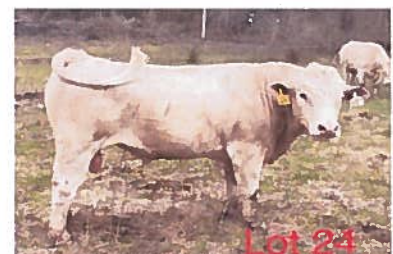
24	MC WM Southern Legend Jon 687	P	Charolais								
	Meadows Creek Farm		Tattoo								
	687										
DOB	3/10/17	Reg. No.	M918974								
Sire:	Southern Legend 38027										
Dam's Sire	OW Sandcreek S179										
EPD's/Percentile Rank				Performance Data/Ratio							
BW	WW	YW	M	BW	WW	SC					
-0.7	28	52	11	75	600	36					
30%	65%	60%	45%								



Lot 19



Lot 21



Lot 24

# MEADOWS CREEK CHAROLAIS X ANGUS BULLS

25	MC Gray 60	1/2 Char x 1/2 Ang				
Meadows Creek Farm		Tattoo				
DOB	10/9/16 Reg. No. Commerc.	F60				
Sire:	RHM Shurr Wind 241					
Dam's Sire	Last Call JH 945					
EPD's/Percentile Rank		Performance Data/Ratio				
BW	WW	YW	M	BW	WW	SC
				85		34



# MEADOWS CREEK SIM X ANGUS BULLS

26	LLCC Wide Load D607	3/4 Sim x 1/4 Angus				
Meadows Creek Farm		Tattoo				
DOB	9/6/16 Reg. No. 3273181	D607				
Sire:	W/C Locked Up 2101B					
Dam's Sire	JM DT-H25-U53					
EPD's/Percentile Rank		Performance Data/Ratio				
BW	WW	YW	M	BW	WW	SC
1.7	61.9	99.3	23.4	69	654	39
80%	65%	50%	40%		98	

NOTES:

# MEADOWS CREEK ANGUS BULLS

27	MC BBC Delbert 771	Angus				
	Meadows Creek Farm	Tattoo				
	771					
DOB	10/6/16 Reg. No. 18947977 ET					
Sire:	OCC Anchor 771A					
Dam's Sire	Papa Durabull 9805					
EPD's/Percentile Rank				Performance Data/Ratio		
BW	WW	YW	M	BW	WW	SC
2.1	26	48	14			37
70%	95%	95%	95%			

28	AAF Ridgeland 6017	Angus				
	Meadows Creek Farm	Tattoo				
	6017					
DOB	10/20/16 Reg. No. 18582663					
Sire:	AAF Cedar Ridge 401					
Dam's Sire	BC Classic 385-7					
EPD's/Percentile Rank				Performance Data/Ratio		
BW	WW	YW	M	BW	WW	SC
0.7	50	88	21			37
35%	60%	60%	75%			

29	In Focus 036	Angus				
	Meadows Creek Farm	Tattoo				
	36					
DOB	12/14/16 Reg. No. 19248685 (OHP)					
Sire:	Thompson In Focus T 468					
Dam's Sire	Thompson Objective T327					
EPD's/Percentile Rank				Performance Data/Ratio		
BW	WW	YW	M	BW	WW	SC
1.3	46	82	24	68		39
50%	75%	70%	50%			

30	Classified JH 157	Angus				
	Meadows Creek Farm	Tattoo				
	157					
DOB	1/5/17 Reg. No.					
Sire:	SAV Classified 3427					
Dam's Sire	SAV Mandan 5664					
Estimated EPD's/Percentile Rank				Performance Data/Ratio		
BW	WW	YW	M	BW	WW	SC
2.7	50	91	34	68		35
80%	50%	45%	5%			

31	Champion Hill Bismarck 6908	Angus				
	Meadows Creek Farm	Tattoo				
	6908					
DOB	7/11/16 Reg. No. 18613166 ET					
Sire:	SAV Bismarck 5682					
Dam's Sire	SAV Brave 8320					
EPD's/Percentile Rank				Performance Data/Ratio		
BW	WW	YW	M	BW	WW	SC
2.5	50	88	18	67	602	37
75%	60%	60%	90%			

32	In Focus 176	Angus				
	Meadows Creek Farm	Tattoo				
	176					
DOB	11/23/16 Reg. No. 19248682 (OHP)					
Sire:	Thompson In Focus T 468					
Dam's Sire	Thompson Objective T 327					
EPD's/Percentile Rank				Performance Data/Ratio		
BW	WW	YW	M	BW	WW	SC
1.0	43	78	23	71		38
45%	80%	80%	60%			



# MEADOWS CREEK ANGUS BULLS

33	Resource JH 397	Angus				
	Meadows Creek Farm	Tattoo				
		397				
DOB	11/26/16 Reg. No.					
Sire:	SAV Resource 1441					
Dam's Sire	SAV 004 Predominant 4438					
Estimated EPD's/Percentile Rank				Performance Data/Ratio		
BW	WW	YW	M	BW	WW	SC
2.9	55	99	21	76		34
75%	45%	55%	65%			

34	Classified JH 247	Angus				
	Meadows Creek Farm	Tattoo				
		247				
DOB	2/2/17 Reg. No.					
Sire:	SAV Classified 3427					
Dam's Sire	GAR Predestined					
Estimated EPD's/Percentile Rank				Performance Data/Ratio		
BW	WW	YW	M	BW	WW	SC
2.5	50	90	30	70		37
75%	55%	50%	25%			

35	E&E Mars 513-126	Angus				
	Meadows Creek Farm	Tattoo				
		126				
DOB	11/3/16 Reg. No. 18844744					
Sire:	MAR Innovation 251					
Dam's Sire	Connealy Final Product					
EPD's/Percentile Rank				Performance Data/Ratio		
BW	WW	YW	M	BW	WW	SC
2.6	65	116	20	75	658	36
80%	15%	15%	80%			

36	In Focus 316	Angus				
	Meadows Creek Farm	Tattoo				
		316				
DOB	3/21/17 Reg. No. Commercial					
Sire:	Thompson In Focus T468					
Dam's Sire	Thompson Objective T 327					
Estimated EPD's/Percentile Rank				Performance Data/Ratio		
BW	WW	YW	M	BW	WW	SC
0.7	46	84	24	70		34
35%	70%	70%	50%			

37	Champion Hill Universal 6883	Angus				
	Meadows Creek Farm	Tattoo				
		6883				
DOB	7/2/16 Reg. No. 18613138 ET					
Sire:	SAV Universal 4038					
Dam's Sire	SAV Pioneer 7301					
EPD's/Percentile Rank				Performance Data/Ratio		
BW	WW	YW	M	BW	WW	SC
4.1	68	112	24	70	747	34
95%	10%	20%	50%			

38	Classified JH 517	Angus				
	Meadows Creek Farm	Tattoo				
		517				
DOB	3/16/17 Reg. No.					
Sire:	SAV Classified 3427					
Dam's Sire	SAV Bismarck 5682					
Estimated EPD's/Percentile Rank				Performance Data/Ratio		
BW	WW	YW	M	BW	WW	SC
2.3	53	92	27	71		34
70%	45%	45%	35%			



# MULL MEADOW FARM ANGUS BULLS

40	Mull Meadow Impression 4506	Angus				
	Mull Meadow Farm	Tattoo				
		4506				
DOB	10/5/16 Reg. No. 19256655					
Sire:	Conneally Impression					
Dam's Sire	Mull Meadow Skymore 1775					
EPD's/Percentile Rank				Performance Data/Ratio		
BW	WW	YW	M	BW	WW	SC
1.2	46	79	19	71		39
60%	75%	65%	15%			

41	Mull Meadow Yon Focus 3787	Angus				
	Mull Meadow Farm	Tattoo				
		3787				
DOB	3/1/17 Reg. No. 19363677					
Sire:	Yon Future Focus C423					
Dam's Sire	Mull Meadow Right Time 1552					
EPD's/Percentile Rank				Performance Data/Ratio		
BW	WW	YW	M	BW	WW	SC
-0.4	50	89	27	71		39
60%	75%	65%	15%			

42	Mull Meadow Mentor 3956	Angus				
	Mull Meadow Farm	Tattoo				
		3956				
DOB	2/8/16 Reg. No. 19364765					
Sire:	Conneally Mentor 7374					
Dam's Sire	Bar EXT Traveller 205					
EPD's/Percentile Rank				Performance Data/Ratio		
BW	WW	YW	M	BW	WW	SC
1.7	47	83	26	72		42
60%	75%	65%	15%			

43	Mull Meadow Impression 3857	Angus				
	Mull Meadow Farm	Tattoo				
		3857				
DOB	5/3/17 Reg. No. 19363679					
Sire:	Mull Meadow Impression 4003					
Dam's Sire	SS Objective T510 OT26					
EPD's/Percentile Rank				Performance Data/Ratio		
BW	WW	YW	M	BW	WW	SC
0.9	55	95	26	70		38
60%	75%	65%	15%			

44	Mull Meadow Consensus 4776	Angus				
	Mull Meadow Farm	Tattoo				
		4776				
DOB	10/28/16 Reg. No. 19256656					
Sire:	Conneally Consensus 7229					
Dam's Sire	SAV Mandan 5664					
EPD's/Percentile Rank				Performance Data/Ratio		
BW	WW	YW	M	BW	WW	SC
1.7	57	99	28	69		37
60%	75%	65%	15%			

45	Mull Meadow Yon Focus 4937	Angus				
	Mull Meadow Farm	Tattoo				
		4937				
DOB	7/14/17 Reg. No. 19363678					
Sire:	Yon Future Focus C423					
Dam's Sire	ALC Big Eye DO9N					
EPD's/Percentile Rank				Performance Data/Ratio		
BW	WW	YW	M	BW	WW	SC
-0.3	51	91	30	70		35
60%	75%	65%	15%			

# COLLINS FARMS ANGUS BULLS

<b>51</b>	<b>JSC HF Prophet 020 1601</b>						<b>Angus</b>
Collins Farms							<b>Tattoo</b>
DOB 1/26/16 Reg. No. 18442509							<b>1601</b>
Sire: GAR Prophet							
Dam's Sire: GAR Predestined							
EPD's/Percentile Rank				Performance Data/Ratio			
BW	WW	YW	M	BW	WW	SC	
1.8	71	107	29	78	748	36	
60%	5%	25%	20%	100	100		

<b>52</b>	<b>JSC Longevity's Answer 628D</b>						<b>Angus</b>
Collins Farms							<b>Tattoo</b>
DOB 8/26/16 Reg. No. 19364527							<b>628D</b>
Sire: Yon Final Answer W494							
Dam's Sire: N Bar Emulation EXT							
EPD's/Percentile Rank				Performance Data/Ratio			
BW	WW	YW	M	BW	WW	SC	
-0.1	43	82	29	75	752	38	
20%	80%	70%	20%	100	100		

\*non-virgin

<b>53</b>	<b>JSC Capitalist 878 Eye 639</b>						<b>Angus</b>
Collins Farms							<b>Tattoo</b>
DOB 10/1/16 Reg. No. 19364532							<b>639</b>
Sire: Connealy Capitalist 028							
Dam's Sire: ALC Big Eye D09N							
EPD's/Percentile Rank				Performance Data/Ratio			
BW	WW	YW	M	BW	WW	SC	
1	49	86	22	74	725	43	
45%	65%	65%	65%	96	98		

<b>54</b>	<b>JSC Capitalist Mentor 640D</b>						<b>Angus</b>
Collins Farms							<b>Tattoo</b>
DOB 10/1/16 Reg. No. 19364528							<b>640D</b>
Sire: Connealy Capitalist 028							
Dam's Sire: Connealy Mentor 7374							
EPD's/Percentile Rank				Performance Data/Ratio			
BW	WW	YW	M	BW	WW	SC	
2.6	66	120	8	65	760	42	
80%	15%	10%	95%	103	102		

<b>55</b>	<b>JSC Productive Link 1673 651</b>						<b>Angus</b>
Collins Farms							<b>Tattoo</b>
DOB 10/8/16 Reg. No. 19364529							<b>651D</b>
Sire: JSC PF Final Product 312							
Dam's Sire: JSC Link 4X of Finks 2599							
EPD's/Percentile Rank				Performance Data/Ratio			
BW	WW	YW	M	BW	WW	SC	
1.1	56	102	36	68	695	38	
45%	40%	35%	2%	101	100		

<b>56</b>	<b>JSC Traction Eye 2186 659D</b>						<b>Angus</b>
Collins Farms							<b>Tattoo</b>
DOB 10/24/16 Reg. No. 19364529 DDP							<b>659D</b>
Sire: Deer Valley Traction 4383							
Dam's Sire: ALC Big Eye D 09N							
EPD's/Percentile Rank				Performance Data/Ratio			
BW	WW	YW	M	BW	WW	SC	
2	42	81	27	75	745	41	
65%	85%	75%	30%	98	104		





# COLLINS FARMS ANGUS BULLS

<b>57</b>	JSC Traction of 878 613 681D						Angus
Collins Farms						Tattoo	
DOB 12/10/16 Reg. No. 19364531						681D	
Sire: Deer Valley Traction 4383							
Dam's Sire: Bon View New Design 878							
EPD's/Percentile Rank				Performance Data/Ratio			
BW	WW	YW	M	BW	WW	SC	
-0.6	50	81	39	60	760	36	
15%	60%	75%	1%	103	110		

<b>58</b>	JSC Traction Object 687						Angus
Collins Farms						Tattoo	
DOB 1/24/17 Reg. No. 19272850						687D	
Sire: Deer Valley Traction 4383							
Dam's Sire: JSC Objective 909							
EPD's/Percentile Rank				Performance Data/Ratio			
BW	WW	YW	M	BW	WW	SC	
0.9	46	75	24	65	585	38	
40%	75%	85%	50%	97	96		

<b>59</b>	JSC Ext's Traction 404 667D						Angus
Collins Farms						Tattoo	
DOB 11/8/16 Reg. No. 19272849						667D	
Sire: Deer Valley Traction 4383							
Dam's Sire: N Bar Emulation EXT							
EPD's/Percentile Rank				Performance Data/Ratio			
BW	WW	YW	M	BW	WW	SC	
3.9	45	82	26	80	515	39	
95%	75%	70%	35%	96	99		

<b>60</b>	JSC HF Capitalist 1709						Angus
Collins Farms						Tattoo	
DOB 6/8/17 Reg. No. 18945450						1709	
Sire: Connealy Capitalist 028							
Dam's Sire: Hayfield's EXT 2-878 410 706							
EPD's/Percentile Rank				Performance Data/Ratio			
BW	WW	YW	M	BW	WW	SC	
1.1	55	87	23	70	639	38	
45%	40%	65%	60%	104	105		



# TRIPLE E CHIANGUS BULLS

61	TEF 174A 105D	P	20% CHI			
Triple E Farms		Tattoo				
DOB 11/1/16 Reg. No. 395439		105D				
Sire: CK-Motivator 174A PCA						
Dam's Sire: WOGR New Frontier 7G90T						
EPD's/Percentile Rank						
Performance Data/Ratio						
BW	WW	YW	M	BW	WW	SC
1.3	60	98	24	76	632	37
35%	10%	5%	3%		103	



\*Non-Virgin

## NOTES:

# REGISTERED CHAROLAIS FEMALES

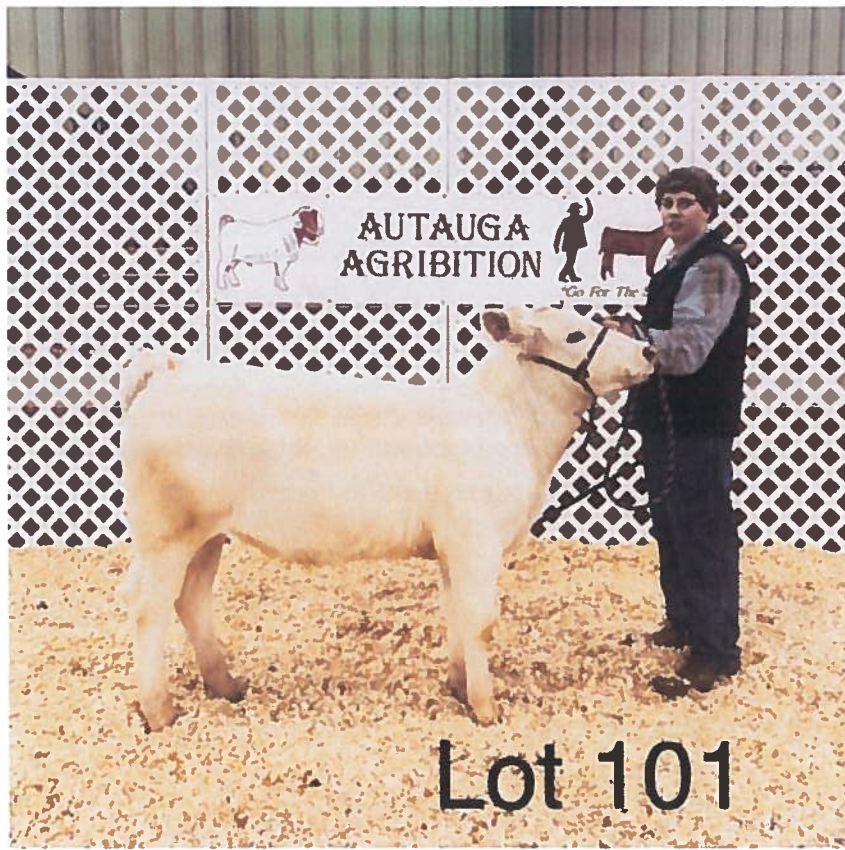
## MEADOWS CREEK FARM

### SHOW HEIFERS

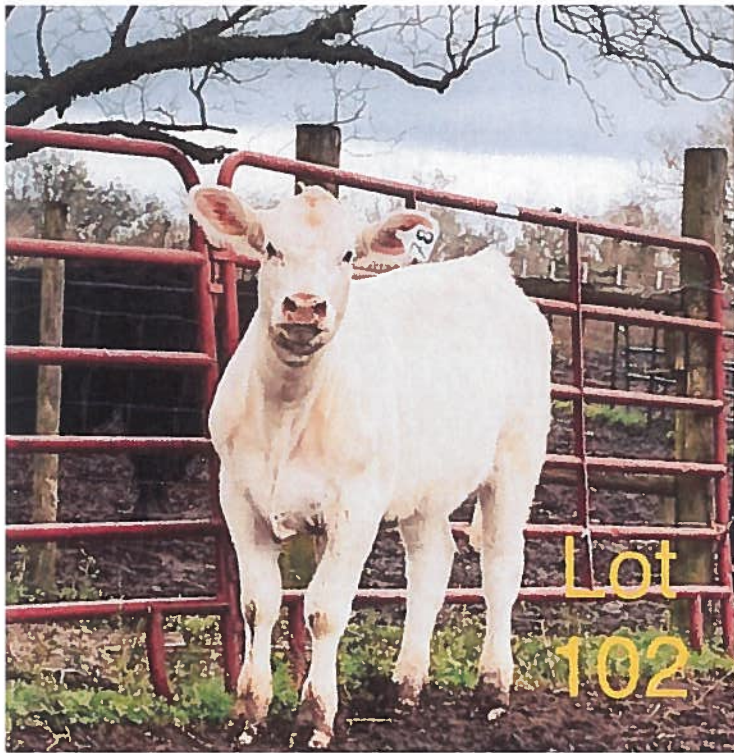
<b>101</b>	<b>MC Annalise 318</b>	<b>F1268548</b>								
Consignor	Meadows Creek Farm	DOB <b>3/9/18</b>								
	TR PZC Rapid Fire 9775 ET Yon Rapid Fire D29 Yon Georgana B133	Tattoo <b>318</b> Polled								
	BJR Sir O'Duke 975 P GDM Lady O'Duke <b>3108</b> GDM Lady Silver Kat 183									
		<table border="1" style="margin-left: auto; margin-right: auto;"> <thead> <tr> <th style="width: 25%;">BIRTH</th> <th style="width: 25%;">WEANING</th> <th style="width: 25%;">YEARLING</th> <th style="width: 25%;">MILK</th> </tr> </thead> <tbody> <tr> <td style="text-align: center;">-2.6</td> <td style="text-align: center;">21</td> <td style="text-align: center;">44</td> <td style="text-align: center;">7</td> </tr> </tbody> </table>	BIRTH	WEANING	YEARLING	MILK	-2.6	21	44	7
BIRTH	WEANING	YEARLING	MILK							
-2.6	21	44	7							

<b>Lot 102</b>	<b>MC Miss Anna Belle 78</b>	<b>F1268537</b>								
Consignor	Meadows Creek Farm	DOB <b>11/13/17</b>								
	LT Ledger 0332 P LT Patriot 4004 PLD LK Miss Rio 2119	Tattoo <b>78</b> Polled								
	OW Sandcreek 2022 PLD MC Miss Sand Creek <b>5123</b> MC Miss Bo Duke 2160									
		<table border="1" style="margin-left: auto; margin-right: auto;"> <thead> <tr> <th style="width: 25%;">BIRTH</th> <th style="width: 25%;">WEANING</th> <th style="width: 25%;">YEARLING</th> <th style="width: 25%;">MILK</th> </tr> </thead> <tbody> <tr> <td style="text-align: center;">0.4</td> <td style="text-align: center;">35</td> <td style="text-align: center;">67</td> <td style="text-align: center;">10</td> </tr> </tbody> </table>	BIRTH	WEANING	YEARLING	MILK	0.4	35	67	10
BIRTH	WEANING	YEARLING	MILK							
0.4	35	67	10							

<b>Lot 103</b>	<b>MC Amber 229</b>	<b>F1268549</b>								
Consignor	Meadows Creek Farm	DOB <b>1/26/18</b>								
	TR PZC Rapid Fire 9775 ET Yon Rapid Fire D29 Yon Georgana B133	Tattoo <b>229</b> Polled								
	BJR Sir O'Duke 975 P MC Miss O'Duke <b>3137</b> GDM Miss Hara 207									
		<table border="1" style="margin-left: auto; margin-right: auto;"> <thead> <tr> <th style="width: 25%;">BIRTH</th> <th style="width: 25%;">WEANING</th> <th style="width: 25%;">YEARLING</th> <th style="width: 25%;">MILK</th> </tr> </thead> <tbody> <tr> <td style="text-align: center;">-1.4</td> <td style="text-align: center;">24</td> <td style="text-align: center;">47</td> <td style="text-align: center;">8</td> </tr> </tbody> </table>	BIRTH	WEANING	YEARLING	MILK	-1.4	24	47	8
BIRTH	WEANING	YEARLING	MILK							
-1.4	24	47	8							



Lot 101



Lot 102

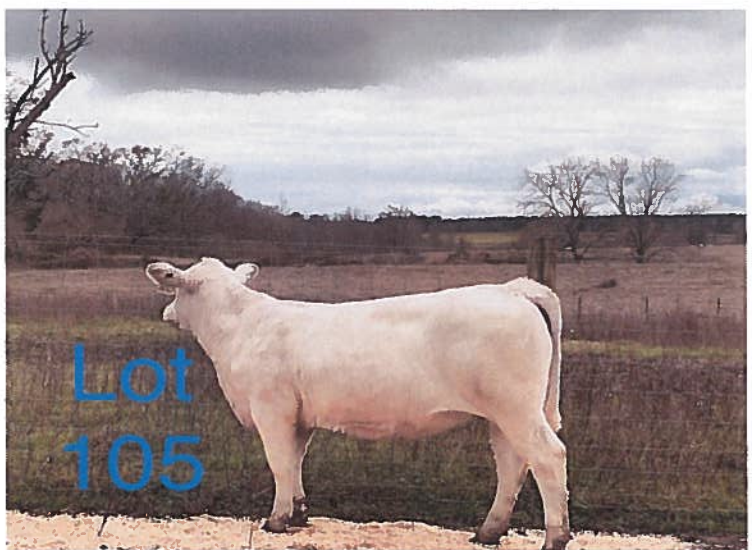


Lot 103

# MEADOWS CREEK FARM SHOW HEIFERS

<b>Lot 104</b>	<b>MC April 300</b>	<b>F1268551</b>								
Consignor	Meadows Creek Farm	DOB <b>2/4/18</b>								
	LT Ledger 0332 P <b>LOF White Rock 46Z</b> LOF Constance Anya 11K	Tattoo <b>300</b> Polled								
	MC Alabama Duke 112 P <b>GDM Miss Oakwood 3128</b> GDM Miss Nebraska 1120									
	<table border="1" style="margin: auto; border-collapse: collapse;"> <thead> <tr> <th style="padding: 2px;">BIRTH</th> <th style="padding: 2px;">WEANING</th> <th style="padding: 2px;">YEARLING</th> <th style="padding: 2px;">MILK</th> </tr> </thead> <tbody> <tr> <td style="text-align: center; padding: 2px;">1.7</td> <td style="text-align: center; padding: 2px;">36</td> <td style="text-align: center; padding: 2px;">69</td> <td style="text-align: center; padding: 2px;">12</td> </tr> </tbody> </table>	BIRTH	WEANING	YEARLING	MILK	1.7	36	69	12	
BIRTH	WEANING	YEARLING	MILK							
1.7	36	69	12							

<b>Lot 105</b>	<b>MC Annie 371</b>	<b>F1268552</b>								
Consignor	Meadows Creek Farm	DOB <b>2/18/18</b>								
	LT Ledger 0332 P <b>LOF White Rock 46Z</b> LOF Constance Anya 11K	Tattoo <b>371</b> Polled								
	WC Big Ben 9036 P <b>MC Lady Bennie Mae 336</b> CLM Miss Hi Amber 103									
	<table border="1" style="margin: auto; border-collapse: collapse;"> <thead> <tr> <th style="padding: 2px;">BIRTH</th> <th style="padding: 2px;">WEANING</th> <th style="padding: 2px;">YEARLING</th> <th style="padding: 2px;">MILK</th> </tr> </thead> <tbody> <tr> <td style="text-align: center; padding: 2px;">2.0</td> <td style="text-align: center; padding: 2px;">33</td> <td style="text-align: center; padding: 2px;">60</td> <td style="text-align: center; padding: 2px;">7</td> </tr> </tbody> </table>	BIRTH	WEANING	YEARLING	MILK	2.0	33	60	7	
BIRTH	WEANING	YEARLING	MILK							
2.0	33	60	7							



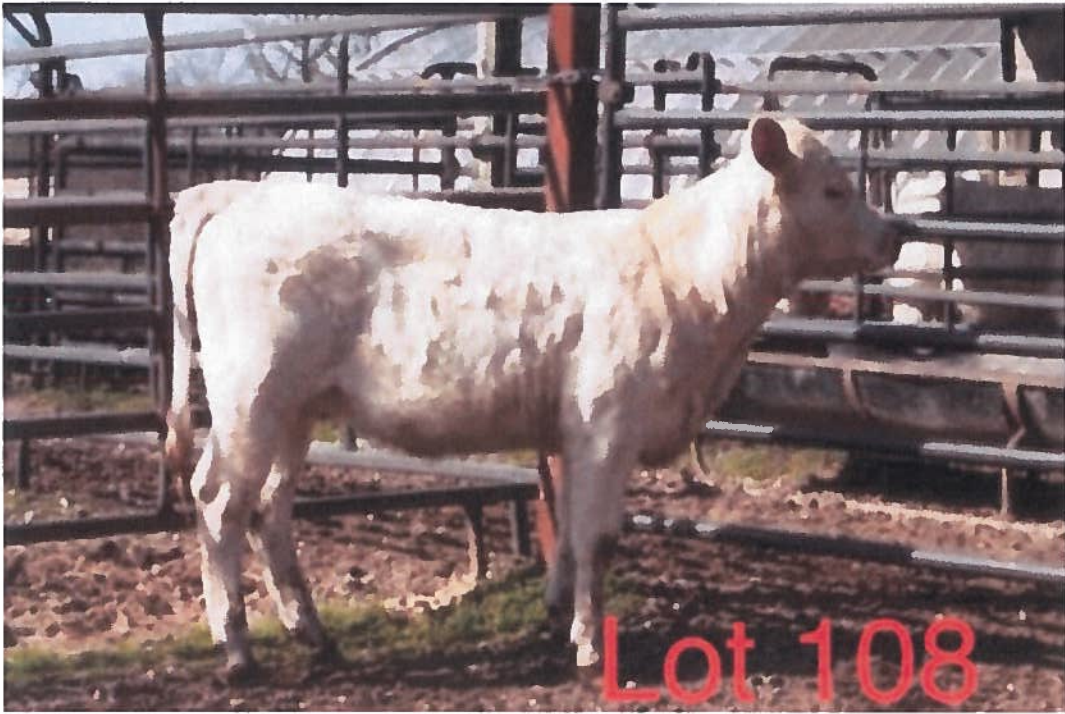
# STAPLES CHAROLAIS FARM

## OPEN HEIFERS

<b>Lot 106</b>	<b>SCF Miss Wendy 8201 P</b>	<b>F1268597</b>								
Consignor	Staples Charolais Farm	DOB 1/28/18								
LT Stagecoach 8068PLD		Tattoo 8201								
SCF Steele Stagecoach 5305 P		Polled								
SCF Miss Dominique 3121 P										
CC Sir Duke 805 P										
SCF Miss Wendy 1133 P										
SCF Miss Wendy 7224 P										
	<table border="1"> <thead> <tr> <th>BIRTH</th> <th>WEANING</th> <th>YEARLING</th> <th>MILK</th> </tr> </thead> <tbody> <tr> <td>-2.1</td> <td>17</td> <td>34</td> <td>17</td> </tr> </tbody> </table>	BIRTH	WEANING	YEARLING	MILK	-2.1	17	34	17	
BIRTH	WEANING	YEARLING	MILK							
-2.1	17	34	17							

<b>Lot 107</b>	<b>SCF Miss Showgirl 8212 P</b>	<b>F1267718</b>								
Consignor	Staples Charolais Farm	DOB 4/14/18								
LT Wyoming Wind 4020 PLD		Tattoo 8212								
OHF Wind 4827 ET		Polled								
MCF MS Juggernaut K21 P										
DMF 241 Gridiron 437W										
RHC Showgirl 218										
RHC Rita 705										
	<table border="1"> <thead> <tr> <th>BIRTH</th> <th>WEANING</th> <th>YEARLING</th> <th>MILK</th> </tr> </thead> <tbody> <tr> <td>1.0</td> <td>28</td> <td>46</td> <td>8</td> </tr> </tbody> </table>	BIRTH	WEANING	YEARLING	MILK	1.0	28	46	8	
BIRTH	WEANING	YEARLING	MILK							
1.0	28	46	8							

<b>Lot 108</b>	<b>SCF Miss Grace 8213 P</b>	<b>F1267717</b>								
Consignor	Staples Charolais Farm	DOB 4/23/18								
LT Wyoming Wind 4020 PLD		Tattoo 8213								
OHF Wind 4827 ET		Polled								
MCF MS Juggernaut K21 P										
Faraway Reuben 20Y										
SCF Miss Grace 3414 P										
SCF Miss Fasttrack 5303 P										
	<table border="1"> <thead> <tr> <th>BIRTH</th> <th>WEANING</th> <th>YEARLING</th> <th>MILK</th> </tr> </thead> <tbody> <tr> <td>0.7</td> <td>28</td> <td>47</td> <td>8</td> </tr> </tbody> </table>	BIRTH	WEANING	YEARLING	MILK	0.7	28	47	8	
BIRTH	WEANING	YEARLING	MILK							
0.7	28	47	8							



NOTES:

# STAPLES CHAROLAIS FARM

## OPEN HEIFERS

**Lot 109** SCF Miss White Wind 8203 P F1268570

Consignor **Staples Charolais Farm** DOB **3/15/18**

LT Wyoming Wind 4020 PLD  
**OHF Wind 4827 ET**  
 MCF MS Juggernaut K21P  
 Tattoo 8203  
 Polled

LOF White Rock 46Z  
**MC Miss White Duke 5101**  
 MC Miss Duke Pat 978

BIRTH	WEANING	YEARLING	MILK
1.7	34	59	6

**Lot 110** SCF Miss Lady Wind 8209 P F1268571

Consignor **Staples Charolais Farm** DOB **3/30/18**

LT Wyoming Wind 4020 PLD  
**OHF Wind 4827 ET**  
 MCF MS Juggernaut K21 P  
 Tattoo 8209  
 Polled

MC Alabama Duke  
**MC Lady Oakwood 5129**  
 GDM Miss Alabama 0102

BIRTH	WEANING	YEARLING	MILK
0.6	24	44	8





# BURKETT FARMS OPEN HEIFERS

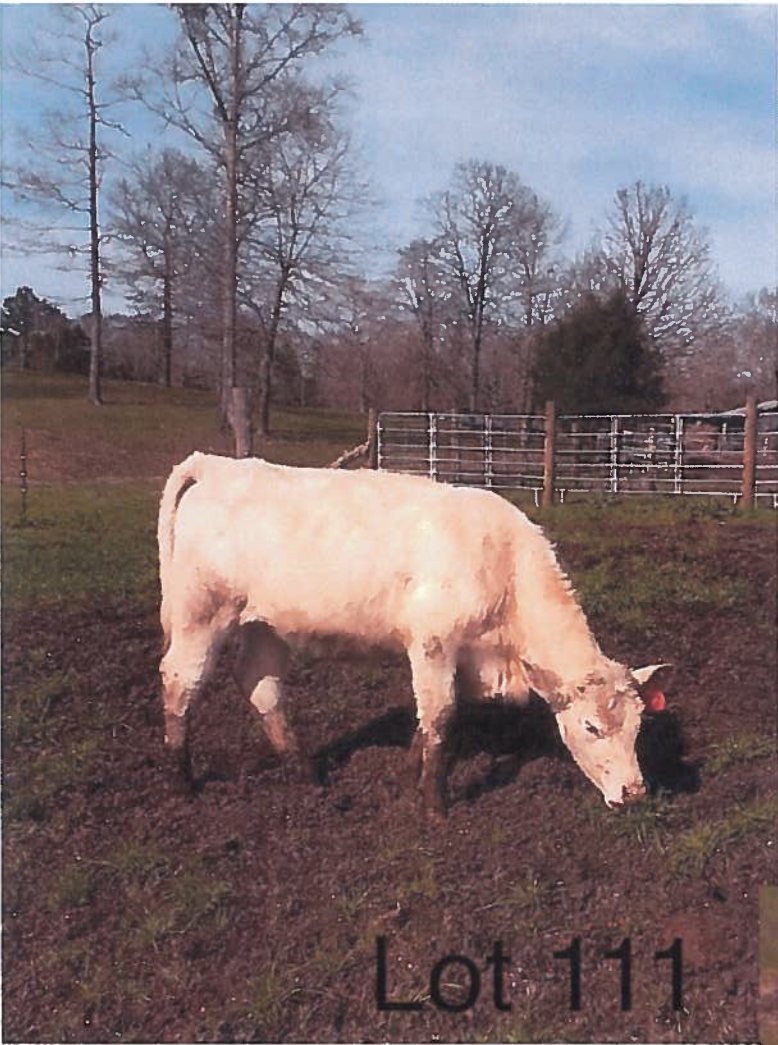
<b>Lot 111</b>	<b>BF Lady Elixor 77B</b>	<b>F1268599</b>								
Consignor	Burkett Farms	DOB 12/22/17								
WR Wrangler W601 MC Wrangler 4149 GDM Miss Sandy Logan 2188		Tattoo 77B Polled								
Partisover Elixir 547P GDM Lady Elixor 7110 GDM Lady Quality 5107										
		<table border="1"> <thead> <tr> <th>BIRTH</th> <th>WEANING</th> <th>YEARLING</th> <th>MILK</th> </tr> </thead> <tbody> <tr> <td>-0.4</td> <td>28</td> <td>45</td> <td>13</td> </tr> </tbody> </table>	BIRTH	WEANING	YEARLING	MILK	-0.4	28	45	13
BIRTH	WEANING	YEARLING	MILK							
-0.4	28	45	13							

<b>Lot 112</b>	<b>BF Miss Wrangler 78B</b>	<b>F1268600</b>								
Consignor	Burkett Farms	DOB 12/25/17								
WR Wrangler W601 MC Wrangler 4149 GDM Miss Sandy Logan 2188		Tattoo 78B Polled								
M6 Schurrtop 5226 CLM Miss Shur Rio 108 CLM Miss Rio Rattler X775										
		<table border="1"> <thead> <tr> <th>BIRTH</th> <th>WEANING</th> <th>YEARLING</th> <th>MILK</th> </tr> </thead> <tbody> <tr> <td>-0.9</td> <td>37</td> <td>60</td> <td>8</td> </tr> </tbody> </table>	BIRTH	WEANING	YEARLING	MILK	-0.9	37	60	8
BIRTH	WEANING	YEARLING	MILK							
-0.9	37	60	8							

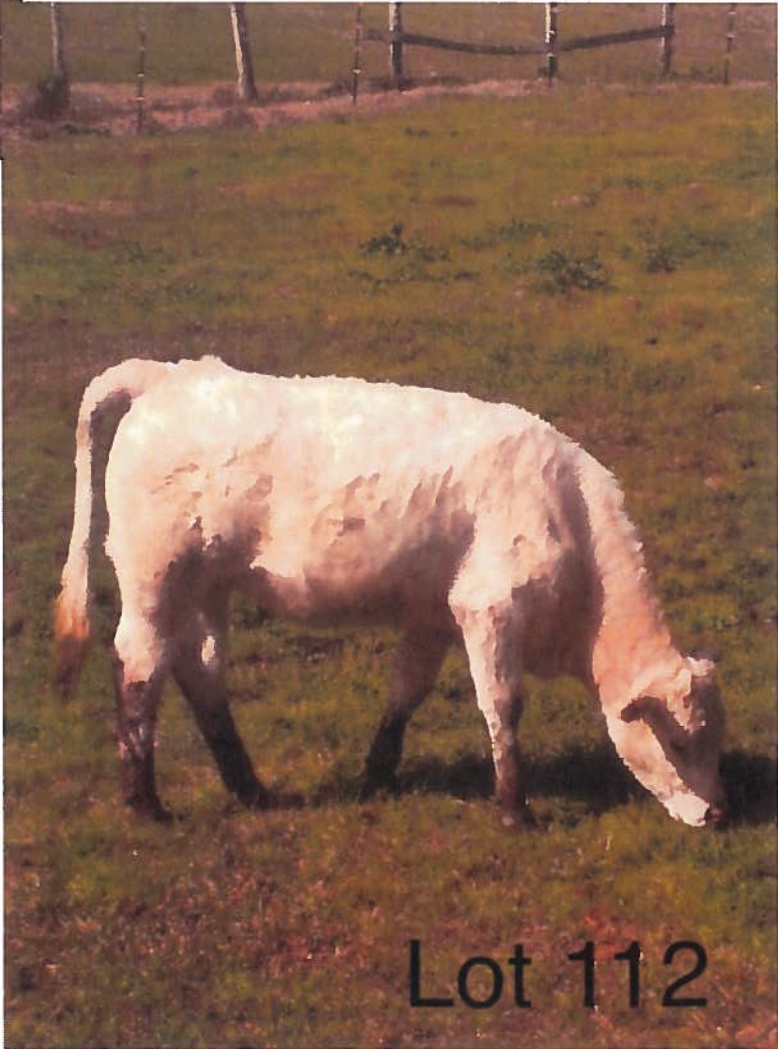
# BURKETT FARMS BRED COW

<b>Lot 113</b>	<b>GDM Miss Sand Creek 5111</b>	<b>F1232870</b>								
Consignor	Burkett Farms	DOB 2/16/15								
MC-OW Sandcreek 375 OW Sandcreek S179 OW Miss Design 3018		Tattoo 5111 Polled								
HEP Poll Alabama 66F GDM Lady Pate 306 GDM Lady Faye 636										
		<table border="1"> <thead> <tr> <th>BIRTH</th> <th>WEANING</th> <th>YEARLING</th> <th>MILK</th> </tr> </thead> <tbody> <tr> <td>-1.4</td> <td>22</td> <td>45</td> <td>18</td> </tr> </tbody> </table>	BIRTH	WEANING	YEARLING	MILK	-1.4	22	45	18
BIRTH	WEANING	YEARLING	MILK							
-1.4	22	45	18							
Pasture Exposed to MC Wrangler 4149 5/20/19 to 9/15/19										

NOTES:



Lot 111



Lot 112

# AKIN CHAROLAIS FARM BRED HEIFERS

<b>Lot 114</b>	<b>JRA Miss Easy Wind D23P</b>	<b>F1241931</b>								
Consignor	Akin Charolais Farm	DOB <b>10/6/16</b>								
	SRC MR Opie T113 <b>JRA Alabama Wind A18</b> JWK Verna E225 ET	Tattoo <b>AD23</b> Polled								
	LT Easy Pro 1158 <b>JRA Alabama Wind Y14P</b> JRA Alabama Wind A904									
		<table border="1" style="margin: auto; border-collapse: collapse;"> <thead> <tr> <th style="width: 25%;">BIRTH</th> <th style="width: 25%;">WEANING</th> <th style="width: 25%;">YEARLING</th> <th style="width: 25%;">MILK</th> </tr> </thead> <tbody> <tr> <td style="text-align: center;">2.4</td> <td style="text-align: center;">26</td> <td style="text-align: center;">50</td> <td style="text-align: center;">8</td> </tr> </tbody> </table>	BIRTH	WEANING	YEARLING	MILK	2.4	26	50	8
BIRTH	WEANING	YEARLING	MILK							
2.4	26	50	8							
AI Bred on 9/27/2018 to M6 Sleep Easy 734, M739763; Pasture Exposed to JRA Polled Business C07 10/13/2018-10/26/2018										

<b>Lot 115</b>	<b>JRA Unlimited Wind D25P</b>	<b>F1231932</b>								
Consignor	Akin Charolais Farm	DOB <b>10/14/16</b>								
	SRC MR Opie T113 <b>JRA Alabama Wind A18</b> JWK Verna E225 ET	Tattoo <b>AD25</b> Polled								
	EP Unlimited Leader 810 <b>EP Lavette 10Z</b> EP Miss Chrome 105									
		<table border="1" style="margin: auto; border-collapse: collapse;"> <thead> <tr> <th style="width: 25%;">BIRTH</th> <th style="width: 25%;">WEANING</th> <th style="width: 25%;">YEARLING</th> <th style="width: 25%;">MILK</th> </tr> </thead> <tbody> <tr> <td style="text-align: center;">0.3</td> <td style="text-align: center;">17</td> <td style="text-align: center;">36</td> <td style="text-align: center;">5</td> </tr> </tbody> </table>	BIRTH	WEANING	YEARLING	MILK	0.3	17	36	5
BIRTH	WEANING	YEARLING	MILK							
0.3	17	36	5							
AI Bred on 9/27/2018 to M6 Sleep Easy 734, M739763; Pasture Exposed to JRA Polled Business C07 10/13/2018-10/26/2018										

<b>Lot 116</b>	<b>JRA Miss Mac D26P</b>	<b>F1241933</b>								
Consignor	Akin Charolais Farm	DOB <b>10/24/16</b>								
	SRC MR Opie T113 <b>JRA Alabama Wind A18</b> JWK Verna E225 ET	Tattoo <b>AD26</b> Polled								
	MU Mr MAC 2204ET <b>KC Miss Mac 1010</b> Miss KC Tradition 441P									
		<table border="1" style="margin: auto; border-collapse: collapse;"> <thead> <tr> <th style="width: 25%;">BIRTH</th> <th style="width: 25%;">WEANING</th> <th style="width: 25%;">YEARLING</th> <th style="width: 25%;">MILK</th> </tr> </thead> <tbody> <tr> <td style="text-align: center;">1</td> <td style="text-align: center;">17</td> <td style="text-align: center;">34</td> <td style="text-align: center;">11</td> </tr> </tbody> </table>	BIRTH	WEANING	YEARLING	MILK	1	17	34	11
BIRTH	WEANING	YEARLING	MILK							
1	17	34	11							
AI Bred on 9/27/2018 to M6 Sleep Easy 734, M739763; Pasture Exposed to JRA Polled Business C07 10/13/2018-10/26/2018										

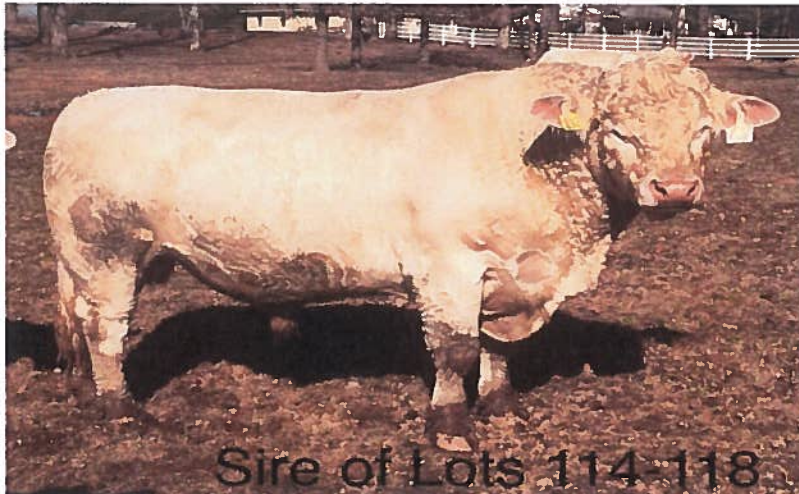
# AKIN CHAROLAIS FARM

## BRED HEIFERS

<b>Lot 117</b>	<b>JRA Alabama Reba D27P</b>	<b>F1241934</b>								
Consignor	Akin Charolais Farm	DOB <b>10/26/16</b>								
	SRC MR Opie T113 <b>JRA Alabama Wind A18</b> JWK Verna E225 ET	Tattoo <b>AD27</b> Polled								
	MR CJ 603 <b>CJ'S Reba 827</b> Monte's Reba 453									
	<table border="1" style="margin: auto; border-collapse: collapse;"> <thead> <tr> <th style="background-color: yellow;">BIRTH</th> <th style="background-color: yellow;">WEANING</th> <th style="background-color: yellow;">YEARLING</th> <th style="background-color: yellow;">MILK</th> </tr> </thead> <tbody> <tr> <td style="text-align: center;">1.5</td> <td style="text-align: center;">28</td> <td style="text-align: center;">57</td> <td style="text-align: center;">10</td> </tr> </tbody> </table>	BIRTH	WEANING	YEARLING	MILK	1.5	28	57	10	
BIRTH	WEANING	YEARLING	MILK							
1.5	28	57	10							
AI Bred on 9/27/2018 to M6 Sleep Easy 734, M739763; Pasture Exposed to JRA Polled Business C07 10/13/2018-10/26/2018										

<b>Lot 118</b>	<b>JRA Miss Gridmaker D30P</b>	<b>F1241935</b>								
Consignor	Akin Charolais Farm	DOB <b>12/18/16</b>								
	SRC MR Opie T113 <b>JRA Alabama Wind A18</b> JWK Verna E225 ET	Tattoo <b>AD30</b> Polled								
	M6 Gridmaker 104PET <b>JRA Miss Grid Generator Z18</b> JRA Miss Generator 805P									
	<table border="1" style="margin: auto; border-collapse: collapse;"> <thead> <tr> <th style="background-color: yellow;">BIRTH</th> <th style="background-color: yellow;">WEANING</th> <th style="background-color: yellow;">YEARLING</th> <th style="background-color: yellow;">MILK</th> </tr> </thead> <tbody> <tr> <td style="text-align: center;">2.2</td> <td style="text-align: center;">26</td> <td style="text-align: center;">50</td> <td style="text-align: center;">8</td> </tr> </tbody> </table>	BIRTH	WEANING	YEARLING	MILK	2.2	26	50	8	
BIRTH	WEANING	YEARLING	MILK							
2.2	26	50	8							
AI Bred on 9/27/2018 to M6 Sleep Easy 734, M739763; Pasture Exposed to JRA Polled Business C07 10/13/2018-10/26/2018										

**MC JRA ALABAMA WIND A18**



# MEADOWS CREEK FARM BRED HEIFERS

<b>Lot 119</b>	<b>MC Miss White Rock 692</b>	<b>F1268822</b>								
Consignor	Meadows Creek Farm	DOB <b>1/20/17</b>								
	LT Ledger 0332 P <b>LOF White Rock 46Z</b> LOF Constance Anya 11K	Tattoo <b>692</b> Polled								
	Thomas Mr Oahe Wind2787M <b>MC Miss Oahe 884</b> GDM Miss Premium 322									
		<table border="1" style="margin-left: auto; margin-right: auto;"> <thead> <tr> <th>BIRTH</th> <th>WEANING</th> <th>YEARLING</th> <th>MILK</th> </tr> </thead> <tbody> <tr> <td style="text-align: center;">2.6</td> <td style="text-align: center;">33</td> <td style="text-align: center;">61</td> <td style="text-align: center;">6</td> </tr> </tbody> </table>	BIRTH	WEANING	YEARLING	MILK	2.6	33	61	6
BIRTH	WEANING	YEARLING	MILK							
2.6	33	61	6							
Confirmed Bred to Yon Rapid Fire D29, M865720 May 1, 2018 to July 15, 2018										

<b>Lot 120</b>	<b>MC Miss Patriot 609</b>	<b>Pending</b>												
Consignor	Meadows Creek Farm	DOB <b>10/13/16</b>												
	LT Ledger 0332 P <b>LT Patriot 4004 PLD</b> LK Miss Rio 2119	Tattoo <b>609</b> Polled												
	M6 Shurrtop 5226 <b>MC Shurr Windy 3171</b> MC Oahe Windy 858													
		<table border="1" style="margin-left: auto; margin-right: auto;"> <thead> <tr> <th colspan="4" style="text-align: center;">ESTIMATE EPD's</th> </tr> <tr> <th>BIRTH</th> <th>WEANING</th> <th>YEARLING</th> <th>MILK</th> </tr> </thead> <tbody> <tr> <td style="text-align: center;">0.5</td> <td style="text-align: center;">40</td> <td style="text-align: center;">72</td> <td style="text-align: center;">3.5</td> </tr> </tbody> </table>	ESTIMATE EPD's				BIRTH	WEANING	YEARLING	MILK	0.5	40	72	3.5
ESTIMATE EPD's														
BIRTH	WEANING	YEARLING	MILK											
0.5	40	72	3.5											
Confirmed Bred to Yon Rapid Fire D29, M865720 May 1, 2018 to July 15, 2018														

<b>Lot 121</b>	<b>MC Miss White Rock 691</b>	<b>F1268821</b>								
Consignor	Meadows Creek Farm	DOB <b>1/20/17</b>								
	LT Ledger 0332 P <b>LOF White Rock 46Z</b> LOF Constance Anya 11K	Tattoo <b>691</b> Polled								
	LR Montana 708 <b>GWM Terri Montana 987</b> GDM Miss Terry 971									
		<table border="1" style="margin-left: auto; margin-right: auto;"> <thead> <tr> <th>BIRTH</th> <th>WEANING</th> <th>YEARLING</th> <th>MILK</th> </tr> </thead> <tbody> <tr> <td style="text-align: center;">0.6</td> <td style="text-align: center;">34</td> <td style="text-align: center;">65</td> <td style="text-align: center;">9</td> </tr> </tbody> </table>	BIRTH	WEANING	YEARLING	MILK	0.6	34	65	9
BIRTH	WEANING	YEARLING	MILK							
0.6	34	65	9							
Confirmed Bred to Yon Rapid Fire D29, M865720 May 1, 2018 to July 15, 2018										

# MEADOWS CREEK FARM BRED HEIFERS

**Lot 123** **WILL Miss Cindy 5157** **RF712158**

Consignor **Meadows Creek Farm** **DOB** **12/9/15**

LT Ledger 0332 P **Tattoo** **5157**  
**Southern Legend 38027** **Polled**  
 Faraway Mary 106X

JWK Premium F224 ET  
**WRM Miss Cindy 1 X162**  
 WRM Miss Pretty GirlX544

BIRTH	WEANING	YEARLING	MILK
-0.7	24	42	9

Confirmed Bred to Yon Rapid Fire D29, M865720 May 1, 2018 to July 15, 2018

**Lot 124** **MC Lady Shurr White 610** **F1268823**

Consignor **Meadows Creek Farm** **DOB** **1/5/17**

LT Ledger 0332 P **Tattoo** **610**  
**LOF White Rock 46Z** **Polled**  
 LOF Constance Anya 11K

M6 Schurrtop 5226  
**GDM Lady Shurr 003**  
 GDM Lady California 5108

BIRTH	WEANING	YEARLING	MILK
2.8	44	77	6

Confirmed Bred to Yon Rapid Fire D29, M865720 May 1, 2018 to July 15, 2018



# MEADOWS CREEK FARM BRED HEIFERS

<b>Lot 125</b>	<b>MC Lady Hyway 611</b>	<b>F1268824</b>								
Consignor	Meadows Creek Farm	DOB 2/11/17								
M6 Hybrid 0171 P ET Southern Hyway 38030 Faraway Mary 106X		Tattoo 611 Polled								
MC AL Gridmaker 101 GDM Lady Lucy 3118 GDM Lady Lucy 01										
	<table border="1"> <thead> <tr> <th>BIRTH</th> <th>WEANING</th> <th>YEARLING</th> <th>MILK</th> </tr> </thead> <tbody> <tr> <td>1.9</td> <td>34</td> <td>56</td> <td>7</td> </tr> </tbody> </table>	BIRTH	WEANING	YEARLING	MILK	1.9	34	56	7	
BIRTH	WEANING	YEARLING	MILK							
1.9	34	56	7							
Confirmed Bred to Yon Rapid Fire D29, M865720 May 1, 2018 to July 15, 2018										

<b>Lot 126</b>	<b>MC White Chocolate 612</b>	<b>F1268825</b>								
Consignor	Meadows Creek Farm	DOB 2/3/17								
LT Ledger 0332 P LOF White Rock 46Z LOF Constance Anya 11K		Tattoo 612 Polled								
HEP Senor io 36N KLM Hershey 783 KLM Miss Reese Cup 931										
	<table border="1"> <thead> <tr> <th>BIRTH</th> <th>WEANING</th> <th>YEARLING</th> <th>MILK</th> </tr> </thead> <tbody> <tr> <td>2.7</td> <td>34</td> <td>66</td> <td>12</td> </tr> </tbody> </table>	BIRTH	WEANING	YEARLING	MILK	2.7	34	66	12	
BIRTH	WEANING	YEARLING	MILK							
2.7	34	66	12							
Confirmed Bred to Yon Rapid Fire D29, M865720 May 1, 2018 to July 15, 2018										

# MEADOWS CREEK FARM BRED COW

<b>127</b>	<b>MC Miss Wrangler 462</b>	<b>F1268814</b>								
Consignor	Meadows Creek Farm	DOB 10/3/15								
CMF 192 Wrangler 256 WR Wrangler W601 WR Miss Princess T629		Tattoo 462 Polled								
OW Sandcreek S179 GDM Lady Nebraska 2190 GDM Lady Mary Lou Jo 060										
	<table border="1"> <thead> <tr> <th>BIRTH</th> <th>WEANING</th> <th>YEARLING</th> <th>MILK</th> </tr> </thead> <tbody> <tr> <td>-1.7</td> <td>33</td> <td>52</td> <td>11</td> </tr> </tbody> </table>	BIRTH	WEANING	YEARLING	MILK	-1.7	33	52	11	
BIRTH	WEANING	YEARLING	MILK							
-1.7	33	52	11							
Confirmed Bred to Southern Legacy 35207, M843710 May 1, 2018 to July 15, 2018										

# REGISTERED ANGUS FEMALES

## MULL MEADOW FARM

<b>Lot 140</b>	<b>Mull Meadow Front Runner 4685</b>	<b>18864237</b>								
Consignor	Mull Meadow Farm	DOB 11/6/15								
	GAR Predestined <b>PA Power Tool 9108</b> Shamrocks BeeBee Queen 3095	Tattoo 4685								
	Sitz New Design 458N <b>Mull Meadow Front Runner 2911</b> Miss Front Runner									
		<table border="1" style="margin-left: auto; margin-right: auto;"> <thead> <tr> <th style="width: 25%;">BIRTH</th> <th style="width: 25%;">WEANING</th> <th style="width: 25%;">YEARLING</th> <th style="width: 25%;">MILK</th> </tr> </thead> <tbody> <tr> <td style="text-align: center;">1.8</td> <td style="text-align: center;">49</td> <td style="text-align: center;">97</td> <td style="text-align: center;">30</td> </tr> </tbody> </table>	BIRTH	WEANING	YEARLING	MILK	1.8	49	97	30
BIRTH	WEANING	YEARLING	MILK							
1.8	49	97	30							
Exposed to Mull Meadow Discovery 5176 April 19, 2018 to December 2, 2018										

<b>Lot 141</b>	<b>Mull Meadow Amy 3316</b>	<b>18683078</b>								
Consignor	Mull Meadow Farm	DOB 2/26/16								
	Connealy Impression <b>Mull Meadow Impression 4003</b> Mull Meadow Topsey 2249	Tattoo 3316								
	Mull Meadow Derrick 1324 <b>Mull Meadow Amy 2476</b> Mull Meadow Amy 2183									
		<table border="1" style="margin-left: auto; margin-right: auto;"> <thead> <tr> <th style="width: 25%;">BIRTH</th> <th style="width: 25%;">WEANING</th> <th style="width: 25%;">YEARLING</th> <th style="width: 25%;">MILK</th> </tr> </thead> <tbody> <tr> <td style="text-align: center;">0.3</td> <td style="text-align: center;">47</td> <td style="text-align: center;">76</td> <td style="text-align: center;">19</td> </tr> </tbody> </table>	BIRTH	WEANING	YEARLING	MILK	0.3	47	76	19
BIRTH	WEANING	YEARLING	MILK							
0.3	47	76	19							
Exposed to Mull Meadow Discovery 5176 April 19, 2018 to December 2, 2018										

<b>Lot 142</b>	<b>Mull Meadow Lucy 4485</b>	<b>18298479</b>								
Consignor	Mull Meadow Farm	DOB 3/3/15								
	Bon View New Design 878 <b>Mull Meadow Caleb 3821</b> Mull Meadow Amy 3118	Tattoo 4485								
	Mull Meadow Romeo 1886 <b>Mull Meadow Lucy 3741</b> Mull Meadow Lucy 1897									
		<table border="1" style="margin-left: auto; margin-right: auto;"> <thead> <tr> <th style="width: 25%;">BIRTH</th> <th style="width: 25%;">WEANING</th> <th style="width: 25%;">YEARLING</th> <th style="width: 25%;">MILK</th> </tr> </thead> <tbody> <tr> <td style="text-align: center;">1.5</td> <td style="text-align: center;">42</td> <td style="text-align: center;">70</td> <td style="text-align: center;">22</td> </tr> </tbody> </table>	BIRTH	WEANING	YEARLING	MILK	1.5	42	70	22
BIRTH	WEANING	YEARLING	MILK							
1.5	42	70	22							
Heifer Calf 1/26/2019 Sire Mull Meadow Weigh Up 2776										



# REGISTERED ANGUS FEMALES

## MULL MEADOW FARM

<b>Lot 143</b>	<b>Mull Meadow Barbara 4295</b>	<b>18298484</b>								
Consignor	Mull Meadow Farm	DOB 4/8/15								
	Ben Field Substance 8506	Tattoo 4295								
	<b>Mull Meadow Substance 3932</b>									
	Mull Meadow Lass 3639									
	Callaways Cure All 1353									
	<b>Mull Meadow Barbara 3140</b>									
	Callaways Barbara 0971									
<table border="1" style="margin: auto; border-collapse: collapse;"> <thead> <tr> <th style="background-color: yellow;">BIRTH</th> <th style="background-color: yellow;">WEANING</th> <th style="background-color: yellow;">YEARLING</th> <th style="background-color: yellow;">MILK</th> </tr> </thead> <tbody> <tr> <td style="text-align: center;">1.4</td> <td style="text-align: center;">62</td> <td style="text-align: center;">111</td> <td style="text-align: center;">24</td> </tr> </tbody> </table>			BIRTH	WEANING	YEARLING	MILK	1.4	62	111	24
BIRTH	WEANING	YEARLING	MILK							
1.4	62	111	24							
Heifer Calf 11/21/2018 Sire: Mull Meadow Discovery 5176										

# COMMERCIAL ANGUS FEMALES

## MULL MEADOW FARM

<b>Lot 144</b>	<b>Commercial</b>	<b>ID 5596</b>								
Consignor	Mull Meadow Farm	DOB 1/15/16								
	4443	Tattoo 5596								
<table border="1" style="margin: auto; border-collapse: collapse;"> <thead> <tr> <th style="background-color: yellow;">BIRTH</th> <th style="background-color: yellow;">WEANING</th> <th style="background-color: yellow;">YEARLING</th> <th style="background-color: yellow;">MILK</th> </tr> </thead> <tbody> <tr> <td style="background-color: yellow;"> </td> <td style="background-color: yellow;"> </td> <td style="background-color: yellow;"> </td> <td style="background-color: yellow;"> </td> </tr> </tbody> </table>			BIRTH	WEANING	YEARLING	MILK				
BIRTH	WEANING	YEARLING	MILK							
Heifer Calf 2/7/2019 Sire Yon Future Focus C423										

# REGISTERED ANGUS FEMALES

## COLLINS FARMS

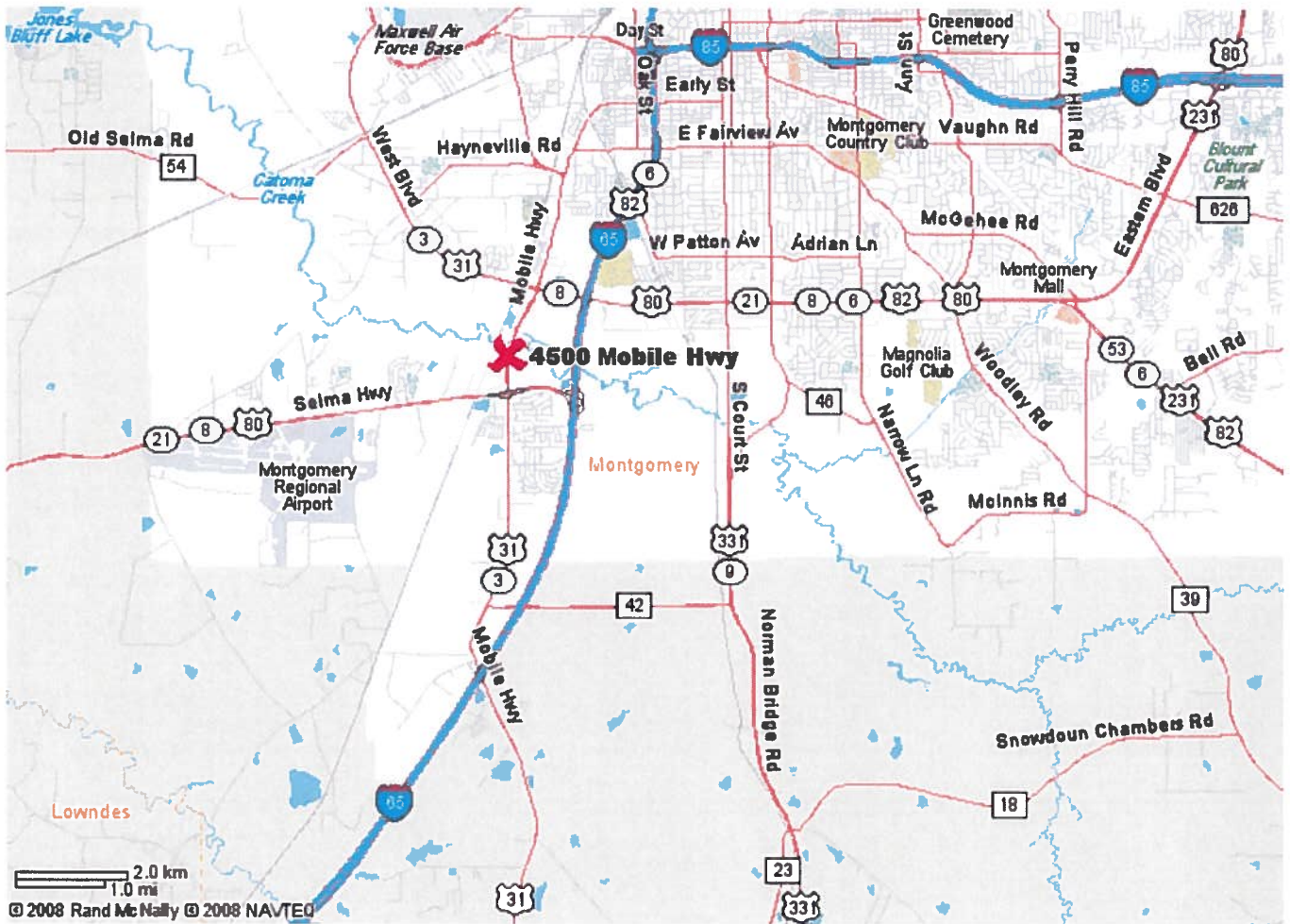
<b>Lot 151</b>	<b>JSC Conf Mentor Qn 244 1834</b>	<b>18081952</b>								
Consignor	Collins Farms	DOB <b>9/27/14</b>								
	Connealy Tobin <b>Connealy Confidence 0100</b> Becka Gala of Conanga 8281	Tattoo <b>1834B</b>								
	Connealy Mentor <b>AAF Queen 244</b> AAF Queen 906									
		<table border="1" style="margin-left: auto; margin-right: auto;"> <thead> <tr> <th style="padding: 2px;">BIRTH</th> <th style="padding: 2px;">WEANING</th> <th style="padding: 2px;">YEARLING</th> <th style="padding: 2px;">MILK</th> </tr> </thead> <tbody> <tr> <td style="text-align: center; padding: 2px;">0.3</td> <td style="text-align: center; padding: 2px;">56</td> <td style="text-align: center; padding: 2px;">99</td> <td style="text-align: center; padding: 2px;">25</td> </tr> </tbody> </table>	BIRTH	WEANING	YEARLING	MILK	0.3	56	99	25
BIRTH	WEANING	YEARLING	MILK							
0.3	56	99	25							
Due March 1 to March 31 to Deer Valley Traction 4383 Reg. 18026755										

<b>Lot 152</b>	<b>JSC Mustang Jean 413 1743</b>	<b>18081536</b>								
Consignor	Collins Farms	DOB <b>11/26/13</b>								
	SAV Final Answer 0035 <b>SAV Mustang 9134</b> SAV Emblynette 7415	Tattoo <b>1743A</b>								
	Rito 616 of 4B20 6807 <b>Hayfields 616 Jean 212-413</b> Hayfields 9M9 Sauga 927-212									
		<table border="1" style="margin-left: auto; margin-right: auto;"> <thead> <tr> <th style="padding: 2px;">BIRTH</th> <th style="padding: 2px;">WEANING</th> <th style="padding: 2px;">YEARLING</th> <th style="padding: 2px;">MILK</th> </tr> </thead> <tbody> <tr> <td style="text-align: center; padding: 2px;">-2.5</td> <td style="text-align: center; padding: 2px;">34</td> <td style="text-align: center; padding: 2px;">67</td> <td style="text-align: center; padding: 2px;">35</td> </tr> </tbody> </table>	BIRTH	WEANING	YEARLING	MILK	-2.5	34	67	35
BIRTH	WEANING	YEARLING	MILK							
-2.5	34	67	35							
Due March 15 to April 30 to Deer Valley Traction 4383 Reg. 18026755										

Map to Montgomery Stockyard:

4500 Mobile Hwy.

Montgomery AL 36108



Catalog Printed by:  
Creative Printing  
2501 East 5th Street  
Montgomery, AL 36107  
(P) 334-281-1315  
(F) 334-281-8273

**creative  
printing**

DESIGN | SIGNS | + MORE

POWERED BY  
WALKER360

# Meadows Creek Farm Black & White Spring Forward Bull Sale

Including Consignments from Collins Farms,  
& Mull Meadow Farm

4th Annual

## Black & White Spring Forward Bull Sale

53 Bulls

Special Female Feature:

34 Registered Charolais-

\*5 Show Heifers

6 Registered Angus

30 Commercial Angus Cows - 3 to 8 years old

30 Commercial Red Angus/Simmental Cows —

4 to 8 years old

February 23, 2019

12:00 p.m. CST

Montgomery Stockyard

Montgomery, Alabama

### FUTURE SALES:

April 27, 2019

Collins Farms Bred Heifer Open House Sale

Collins Farm, Cusseta, AL

November 8, 2019

Arcadia Black & White Bull Sale

Arcadia Stockyard, Arcadia, FL

December 6, 2019

It's All Black & White Bull Sale

Montgomery Stockyard, Montgomery, AL